

TREATMENT PERFORMANCE RESULTS

Kingspan Environmental Ltd.
College Rd North, Aston Clinton, Aylesbury, Bucks, GB

EN 12566-3

Results corresponding to EN 12566-3 and S.R. 66

PIA-SR66-1610-1116

BioDisc

Rotating biological contractor

Nominal organic daily load	0.29 kg/d		
Nominal hydraulic daily load	0.90 m ³ /d		
Material	Glass reinforced plastic		
Watertightness	Pass		
Structural behaviour (Pit Test)	Pass (also wet conditions)		
Durability	Pass		
Treatment efficiency (nominal sequences)		Efficiency	Effluent
		COD	88.3 % 73 mg/l
		BOD ₅	93.7 % 20 mg/l
		NH ₄ -N	87.2 % 5.0 mg/l
		SS	93.3 % 23 mg/l
Number of desludging	Not more than once		
Electrical consumption	1.5 kWh/d		

Performance tested by:

PIA – Prüfinstitut für Abwassertechnik GmbH
(PIA GmbH)
Hergenrather Weg 30
52074 Aachen, Germany

This document replaces neither the declaration of performance nor the CE marking.



Notified Body
No.: 1739



Certified according to
ISO 9001:2008

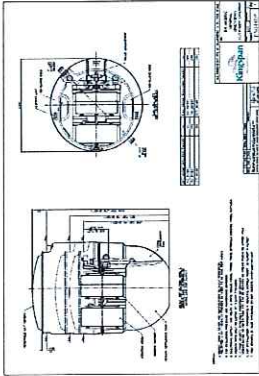
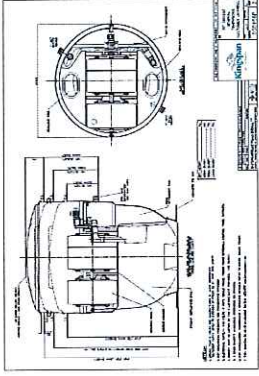


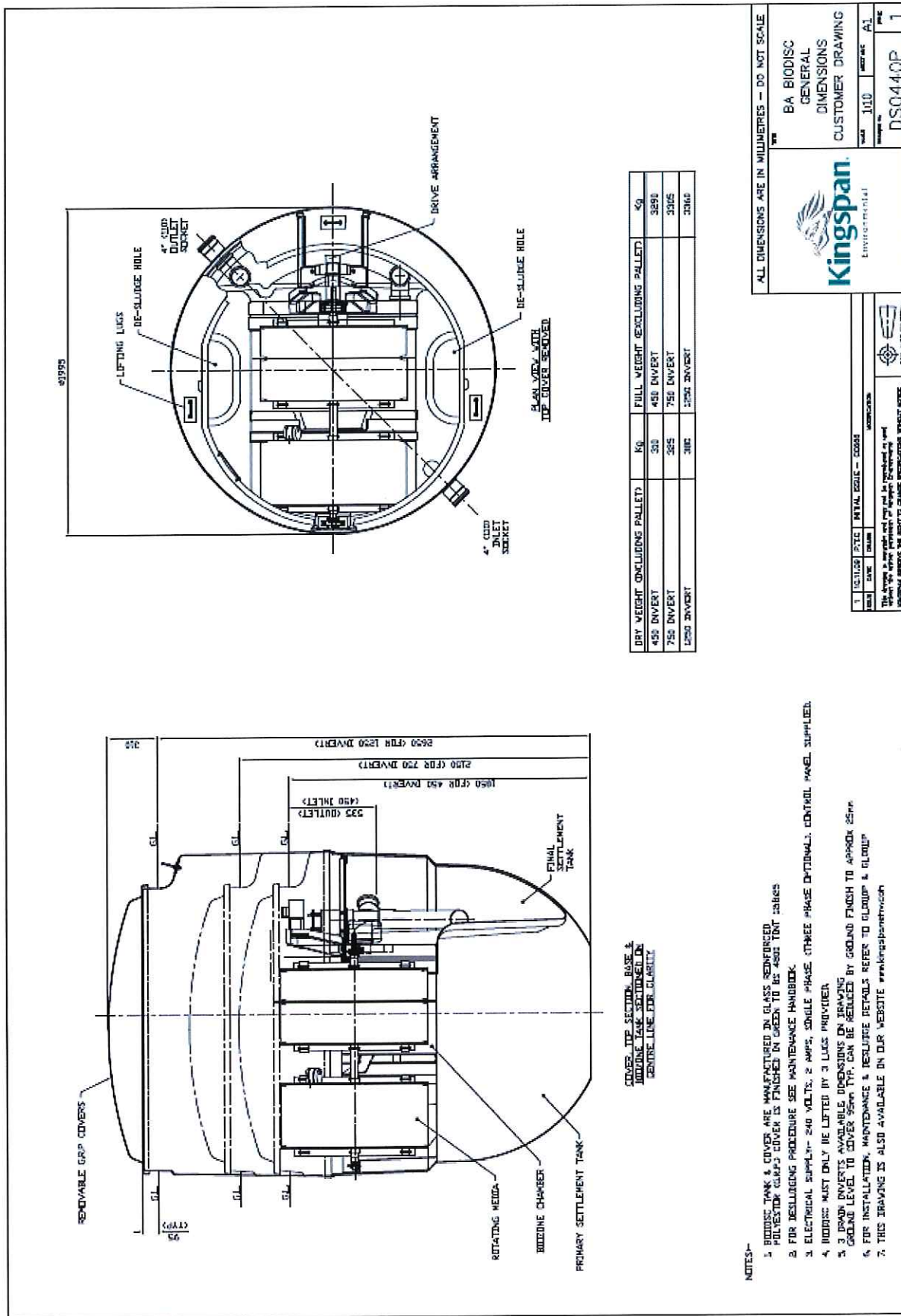
Prüfinstitut für Abwassertechnik GmbH
Elmar Lancé
geprüft - tested - testé

Elmar Lancé

December 2016

BioDisc range and its referring test reports:

Population Equation (PE)	Drawing of model of the range	Watertightness (EN 12566-3 Annex A)	Treatment Efficiency (EN 12566-3 Annex B)	Structural Behaviour (EN 12566-3 Annex C)	Durability
Initial type test (ITT) 6		Pass PIA2012-WD-1209-1056	Pass PIA2012-182B09	Pass For wet ground conditions also, Installation depth 1.00 m from inlet invert	Pass PIA2016-DH-1610-1115.01
12		Pass PIA2012-WD-1209-1056	Pass Range conformity according to S.R. 66:2015	Pass PIA2012-ST-PIT-1209-1056 For wet ground conditions also, Installation depth 1.00 m from inlet invert	Pass PIA2016-DH-1610-1115.01



ALL DIMENSIONS ARE IN MILLIMETRES - DO NOT SCALE

Kingspan Environmental

BA BIODISC GENERAL DIMENSIONS CUSTOMER DRAWING

DATE: 10/10/10
 DRAWN BY: A1
 CHECKED BY: A1
 PROJECT: DS0440P
 PAGE: 1

1. 12/10/10
 2. 10/10/10
 3. 10/10/10
 4. 10/10/10

REVISIONS

THIS DRAWING IS THE PROPERTY OF KINGSSPAN ENVIRONMENTAL. IT IS TO BE USED ONLY FOR THE PROJECT AND SITE SPECIFICALLY IDENTIFIED IN THE DRAWING. ANY REUSE OR MODIFICATION WITHOUT THE WRITTEN PERMISSION OF KINGSSPAN ENVIRONMENTAL IS STRICTLY FORBIDDEN.

